

Towards Better Human Society

SEF

Business
Consulting & Support
by
Senior Experts



Non Profit Organization
Senior Expert Forum

Who's SEF

SEF is a Non Profit Organization and consists of the senior expert members with various experiences, extensive knowledge and know how in the industrial and commercial areas.

Founded: November, 2002

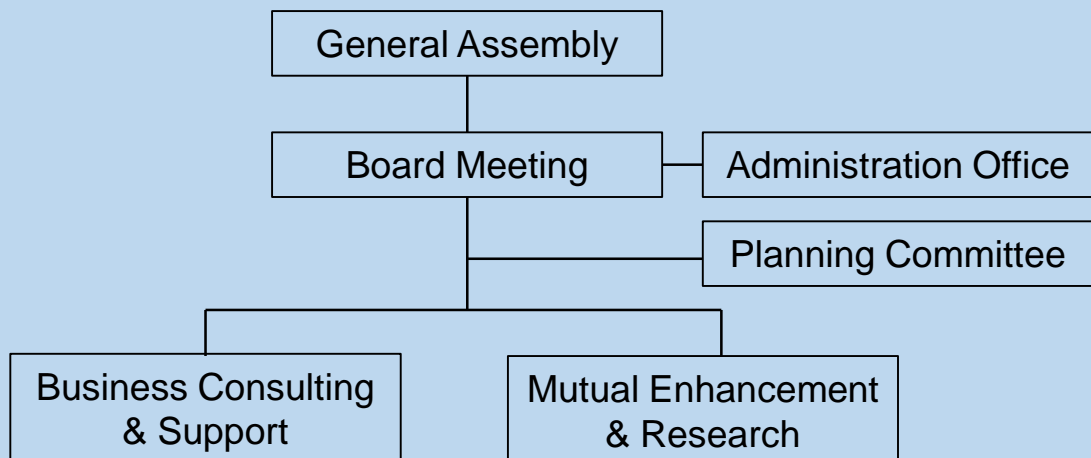
Principles:

- ✓ Substantial contribution to the society by providing consulting services and practical assistance to corporations in all industries and public sectors.
- ✓ Mutual edification and enhancement by each member.

Members:

- ✓ Regular member who is engaged in SEF activities on daily basis.
- ✓ Associate member who is engaged in SEF activities on Job basis.
- ✓ Corporate who favors SEF and support its activities.

Organization:



Activities of SEF

Business Consulting Services

- Technical Development
- Products Development
- Products Improvement
- Management Improvement
- Global Operation

Business Supporting Services

- Plant Construction
- Equipment Improvement
- Business & Sales Support
- Employee Training
- Translation

Four Activities

Lecture & Seminar (SEF Salon) Themes

- World Situations & Economic Climate
- Corporate Management
- Advanced Technology
- Energy & Environment
- Culture Lecture

Research & Forum (SEF Forum) Issues

- Information Society
- Risk Management
- Japanese Technology
- Industrial Structure
- Energy

Features of SEF

- 1) Effective solution by abundant experiences and know how.
- 2) Complete support by making full use of extensive network of partners and members.
- 3) Coping with the needs of various clients by strenuous study and research covering all industrial areas.
- 4) High quality service at the reasonable charge.



Meeting



Plant Tour

Contact:

Non Profit Organization

Senior Expert Forum

Nihonbashi Royal Plaza 706, 17-1 Kabutocho Nihonbashi,
Chuo-ku, Tokyo 103-0026, Japan

[TEL:+81-\(0\)80-8863-0951](tel:+81-080-8863-0951)

Email: info@sef-jpn.org

URL: <http://sef-jpn.org/>